

Joseph<sup>®</sup>  
Joseph

Editions | Sage  
Autumn 2021





# Joseph Joseph®

## EDITIONS

Combining innovative design with distinctive colour has always been an essential part of what makes a Joseph Joseph product special.

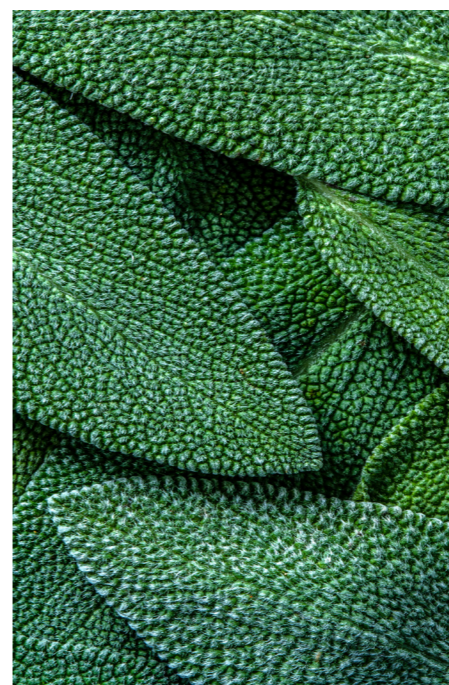
This passion for blending perfect function with beautiful style has led us to create Editions – a collection of our bestselling products in the season’s most sought after colour palette.

For this latest exclusive collection, we’ve taken our inspiration from the colours and textures of a classic herb garden and given them a contemporary twist.

Editions Sage features refreshing tones of powdery greens blending seamlessly through to subtle shades of warm, bleached stones – such as limestone, alabaster and marble – so reminiscent of weathered planters and statuary.

This fusion of hues creates a stylish collection of kitchenware that compliments a range of interior styles and echoes the growing trend for combining forward-thinking design with the natural world.

Each item comes boxed in stylish, bespoke Editions packaging that ensures these items are not only extremely giftable but also have real impact when merchandised in-store together.





### Elevate™ 6-piece kitchen tool set with rotating storage stand

Concept by Gillian Westley  
Design by Derek Roberts  
Design registered

The Elevate™ range of kitchen tools is designed to improve hygiene and minimise the mess made by placing utensils onto kitchen surfaces during use. Each tool has a weighted handle with an integrated tool rest that prevents the tool head from touching the work surface when placed down. This set features nylon tool heads with ergonomic, heat-resistant silicone handles. Ideal for use with non-stick cookware, their nylon heads are heat-resistant

up to 200 °C/392 °F. Set comprises: Solid Spoon, Slotted Spoon, Flexible Turner, Slotted Turner, Ladle, Spaghetti Server, Rotating Storage Stand.

Tools: Dishwasher safe. Carousel: Wipe clean with a damp cloth.



Elevate™ 6-piece Carousel Set  
**(10540)** Sage  
**Dimensions**  
H34 x W23 x D23 cm (H13½ x W9 x D9 inches)



Cleaner worktops with Elevate™ technology



### Elevate™ Knives Carousel 5-piece knife set with rotating block

Concept by Gillian Westley  
Design by Derek Roberts  
Design registered

The Elevate™ range of kitchen tools is designed to improve hygiene and reduce mess. Each tool has an innovative weighted handle with an integrated tool rest, ensuring that the head or blade is always raised off the work surface, when placed down.

These Elevate™ knives are made from Japanese stainless steel and have ergonomic handles. The knife block rotates for easy selection and features vertical slots that make removing each knife easy, even if stored beneath a cupboard. The knife block also features a non-slip base.

Not dishwasher safe. Knives: Hand wash only and dry immediately. Carousel: Wipe clean with a damp cloth.



Cleaner worktops with Elevate™ technology



Rotating knife block with side slots for easy access and non-slip base

-  3.5" Paring knife
-  4.5" Serrated knife
-  5.5" Santoku knife
-  6.5" Chef's knife
-  8" Bread knife



Elevate™ Knives Carousel  
**(10541)** Sage  
**Dimensions**  
H36 x W14 x D14 cm (H14¼ x W5½ x D5½ inches)



## Nest™ Lock 5-piece storage container set

Design by Morph  
Design registered

The problem with most storage containers is that they take up precious cupboard space when not in use and usually require the lids and bases to be stored separately - which makes finding and pairing both elements a hassle. With the unique design of Nest™ Lock, container bases nest neatly inside each other and lids clip conveniently together for efficient, space-saving storage. As each element is colour-coded too, it's very easy to match lids with bases when you need them. All products in the Nest™ Lock range work together so you can build your own

collection to suit your needs, whether it be for fridge/freezer storage, batch cooking or family lunch boxes. All containers feature lockable, airtight and 100% leakproof lids.

Container sizes: 1 x 230ml (8 fl. oz),  
1 x 540ml (18 fl. oz), 1 x 1.1L (37 fl. oz),  
1 x 1.85L (63 fl. oz), 1 x 3L (101 fl. oz)

Bases and lids - Freezer, microwave and dishwasher safe (top rack only). BPA-free.



Easy-find snap-together lids



Compact space-saving design

Nest™ Lock  
(81127) Sage

Dimensions H16.9 x W24.5 x D20 cm  
(H6½ x W9½ x D7¾ inches)



Easy-access containers



Airtight silicone seals



Easy-pour corners

## Podium™ 5-piece storage container set

Design registered

Using stackable storage jars can sometimes be a hassle, especially if the one you need is on the bottom of the pile. This smart storage container set, however, features a clever storage stand that allows easy access to any jar, regardless of its position. Each container features a lid with an airtight silicone seal, easy-pour corners and a base that locates securely onto the stand. The stand has an unobtrusive design that supports each container individually and includes non-slip feet on its base.

Container sizes: 1 x 1.9 L (2 qt), 1 x 1.3 L (1.3 qt),  
2 x 900 ml (0.9 qt), 1 x 500 ml (0.5 qt)

Wash and dry by hand.



Podium™  
(81128) Sage

Dimensions H32.2 x W31.2 x D10.4 cm (H12½ x W12¼ x D4¼ inches)









**Nest™ 9 Plus**  
Compact food preparation set

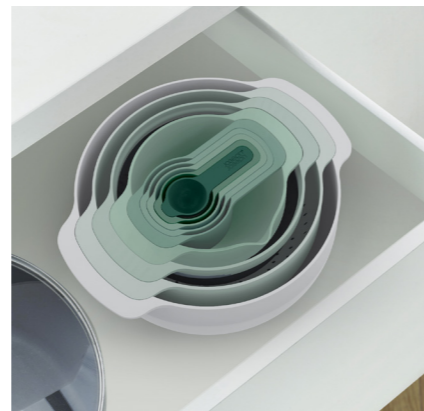
Design by Morph  
Design registered

Nest™ is the ultimate collection of space-saving kitchenware. The unique design allows the individual elements within each set to be stacked neatly together, thereby occupying the absolute minimum amount of space. In this distinct and functional design, the mixing bowls have large non-slip bases and wide carry handles. The small mixing bowl includes measurements inside (ml/fl.oz) for added convenience and a spout for accurate pouring. The measuring cups have been designed to snap together securely and allow measurements from 1 teaspoon (5 ml) to 1 cup (250 ml) to be made. A stainless-steel mesh sieve and a large colander complete the collection of food preparation items.

Dishwasher safe.



- 1/8 cup (5 ml/15 ml)
- 1/4 cup (60 ml)
- 1/3 cup (85 ml)
- 1/2 cup (125 ml)
- 1 cup (250 ml)
- Small non-slip mixing bowl with measurements 0.5 L
- Sieve 1.65 L
- Colander 3 L
- Large non-slip mixing bowl 4.5 L



Space-saving design allows individual elements to stack neatly together



Nest™ 9 Plus  
**(40112)** Sage  
**Dimensions**  
H32 x W27 x D14.5 cm  
(H12½ x W10½ x D5¾ inches)

**Folio™**  
Large chopping board set

Design registered

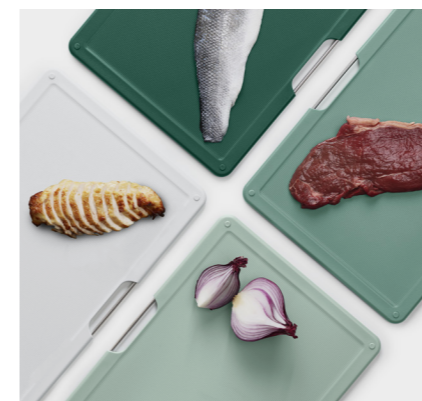
Keep all your chopping board needs beautifully organised with this sleek design. It features a slimline storage case containing four, large colour-coded boards each with knife-friendly, textured cutting surfaces on both sides and non-slip feet. The boards themselves can be easily removed from the case due to the smart angled design and

their stainless-steel selecting bars. The case holds each board neatly apart, allowing air to circulate, and has non-slip feet on the base.

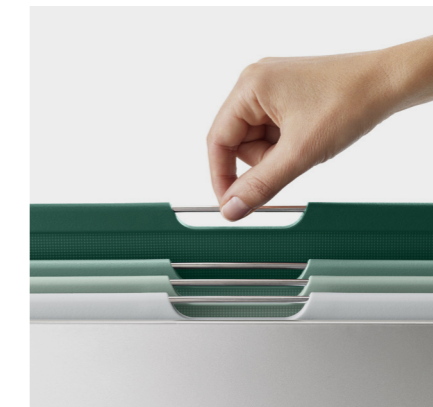
Boards - dishwasher safe; Case - wipe clean with a damp cloth.



Slimline case for organised storage



Colour-coded chopping boards with non-slip feet



Tiered design and stainless-steel bars on boards for easy selection



Folio™ Large  
**(60197)** Sage  
**Dimensions** H26.2 x W35.7 x D7.6 cm  
(H10¼ x W14 x D3 Inches)



## Spiro™ Spiralizer

Design registered

Many spiralizers can be fiddly to use and they often create piles of messy noodles. Spiro, however, makes spiralizing super neat and

easy with its clever, compact design. It comes with two styles of spiralizing blade – coarse and fine – for different noodle thicknesses, plus a handy grating blade. It features a soft-grip lid for easy turning, and two guide arms that help keep food straight as you twist. Most importantly, it has a clear base that collects food as you cut – keeping everything

nicely contained and your worktop cleaner. After use, the three blades and the lid store neatly together with the base for compact storage.

Dishwasher safe.



Spiro™  
(20183) Sage  
Dimensions D7.8 x W7.8 x H16 cm  
(D3 x W3 x H6¼ inches)



Includes coarse and fine spiralizer blades plus rotary grating blade.



Easy-to-use, self-aligning design keeps food straight as you twist the soft grip handle



Simply twist base to grind



Easy to refill



Adjust grinding size by twisting stainless-steel top

## Milltop™ Non-spill salt & pepper mill set

Design registered

Conventional salt & pepper mills often create mess by leaving excess grounds on surfaces when placed down. The simple, elegant design of Milltop™ avoids this problem as the grinding mechanism is at the top of the mill, which means any excess grounds fall back inside the unit after use. The innovative design also does away with a long central spindle for the grinding mechanism, which increases its capacity and makes it much easier to fill. To use, simply invert the mill and twist the base to grind. To adjust the grinding size, simply rotate the stainless-steel top.

Wipe clean with a damp cloth.



Milltop™  
(20182) Sage  
Dimensions H16.9 x W7 x D7 cm  
(H6½ x W2¾ x D2¾ inches)





We are proud to have won the following awards:



Joint Winner - Emerging Entrepreneur of the Year



Winner 2014 - TriScale™



Winner 2020 Product Development  
 Winner 2015 Housewares - Totem  
 Winner 2014 Innovation Award  
 Winner 2013 Innovation Award  
 Winner 2013 - Wash&Drain™  
 Winner 2012 Innovation Award  
 Winner 2011 Innovation Award  
 Winner 2009 Innovation Award  
 Winner 2009 - Nest 8™  
 Winner 2008 Cutting Edge Award - Index™



reddot design award  
 best of the best

Winner 2015 - Totem  
 Winner 2011 - Pie™



reddot design award

Winner 2018 - Titan 20  
 Winner 2017 - Dial™  
 Winner 2016 - SmartBar™  
 Winner 2015 - Twist Grater  
 Winner 2014 - Edge™ Dish Brush  
 Honourable Mention 2013 - TriScale™  
 Winner 2012 - Twist™  
 Winner 2012 - Nest Utensils™  
 Winner 2010 - Y-Grinder™  
 Honourable Mention 2010 - Hands On™  
 Winner 2009 - Nest 8™  
 Winner 2008 - Folding Colander



DESIGN PLUS  
 Winner 2011 - Pie™  
 Winner 2010 - Y-Grinder™  
 Winner 2010 - Hands On™  
 Winner 2009 - Nest 8™



g ia global innovation awards  
 honoring housewares  
 product design excellence  
 Winner 2018 Flex™  
 Winner 2018 Titan  
 Winner 2015  
 Winner 2014  
 Winner 2013  
 Winner 2012  
 Winner 2011



House Beautiful AWARDS 2013  
 Winner Gold 2013 - TriScale™  
 Winner Silver 2013 - DrawerStore™ Cutlery Tray



Winner 2012 - No-spill Mill™



Winner 2009 Kitchenware - Nest 8™  
 Winner 2009 Food Preparation - Folding Colander



Winner 'Prix' 2015 - Totem  
 Winner 'Grand Prix' 2015 - Totem



Winner 2012 - Nest™ 9 Plus  
 Highly Commended 2012 - Arena™  
 Winner 2011 - Pie™  
 Highly Commended 2011 - Rocket™  
 Winner 2010 - Hands On™  
 Highly Commended 2010 - Y-Grinder™  
 Winner 2008 - Index™

# Contact us

## UK

Trade customer enquiries and ordering  
 sales@josephjoseph.com

General account enquiries  
 accounts@josephjoseph.com

General enquiries  
 info@josephjoseph.com

Press enquiries  
 pr@josephjoseph.com

Joseph Joseph Ltd.  
 100 Union Street  
 London, SE1 0HS  
 United Kingdom

Tel: +44 (0)20 7261 1800  
 info@josephjoseph.com

josephjoseph.com

## USA

Trade customer ordering  
 and press enquiries

customercare@josephjoseph.com

Joseph Joseph Inc.  
 41 Madison Avenue,  
 15th Floor  
 New York  
 NY 10010

Tel: +1 917 338 0900  
 Fax: +1 917 338 0912  
 customercare@josephjoseph.com

josephjoseph.com

All product images and specifications are based upon current information. Joseph Joseph reserves the right to make changes from time to time, without notice or obligation, to specifications, colours or materials and to change or discontinue models. Some products or features may not be available in all markets.

Photography by Charlie Bettinson and Steve Wakeham.



Joseph Joseph Ltd.  
100 Union Street  
London SE1 0NL  
info@josephjoseph.com

Joseph Joseph Inc.  
41 Madison Avenue  
15th Floor  
New York NY10010  
customercare@josephjoseph.com

Joseph Joseph SARL  
111, avenue Victor Hugo  
75116 Paris  
renseignements@josephjoseph.com

Joseph Joseph  
Deutschland GmbH  
Königsallee 92a – 4.Stock  
40212 Düsseldorf  
information@josephjoseph.com

Joseph Joseph 株式会社  
Tel. 0570-031-117  
カスタマーサービス受付時間:  
10:00-12:00 / 13:00-18:00  
(土・日・祝日・休業日を除く)

Joseph Joseph (Shanghai) Trading Ltd.  
杰膳 (上海) 贸易有限公司 上海浦东栖霞路  
16弄3号楼11层133室  
saleschina@josephjoseph.com

Joseph Joseph Pty Ltd.  
14/5 Martin Place  
Sydney  
NSW, 2000  
anzsales@josephjoseph.com

[josephjoseph.com](https://www.josephjoseph.com)

